

Walform tube fittings

Clamping jaws for WalformPlus and Walform-WD-SR stainless steel fittings (1.4571)									
Tube outer diameter (mm)	Wall thickness (mm)								
	1*	1.5	2	2.5	3	3.5	4	5	6
6	WAL610897	WAL615765							
8	WAL612561		WAL615766						
10	WAL612562	WAL615767							
12	WAL612563		WAL615768						
15		WAL615769							
16 A			WAL615770						
18			WAL615771						
20			WAL615772						
22			WAL615773						
25			WAL615774		WAL615774				
28			WAL615775						
30			WAL615776			WAL615776			
35			WAL615777			WAL615777			
38			WAL615778			WAL615778			
42			WAL615779						

*WF-WD-SR clamping jaw

Reshaping adapter for WalformPlus and Walform-WD-SR stainless steel fittings (1.4571)									
Tube outer diameter (mm)	Wall thickness (mm)								
	1*	1.5	2	2.5	3	3.5	4	5	6
6	WAL612284	WAL615917							
8	WAL612903		WAL615918						
10	WAL612904	WAL615919	WAL625036						
12	WAL612560	WAL615920	WAL615921	WAL625123					
15		WAL615922	WAL615925						
16 A			WAL615928	WAL615931	WAL615934				
18			WAL615935	WAL615938	WAL615941				
20			WAL615942	WAL615945	WAL615948				
22			WAL615949	WAL615952	WAL615955				
25			WAL624816	WAL615956	WAL615959	WAL615960			
28			WAL615961	WAL615964	WAL615967				
30			WAL615970	WAL615973		WAL615976	WAL615977		
35				WAL615978		WAL615981	WAL615982		
38				WAL615983		WAL615986	WAL615989		
42				WAL615991					

*Removal tool WAL611632 must be used with the WF-WD-SR reshaping adapter.

- Reshaping without internal support
- Reshaping with internal support
- Reshaping for Walform-WD-SR (WF-WD support rings available on request)

Model	Art. no.	Model	Art. no.	Model	Art. no.	Model	Art. no.
Removal tool	WAL617090	Clamping jaws	See table	Reshaping with internal support	See table	Reshaping adapter without internal support	See table



Walform tube fittings

Clamping jaws for WalformPlus-M steel (E235, E355) and stainless steel (1.4571) fittings									
Tube outer diameter (mm)	Wall thickness (mm)								
	1	1.5	2	2.5	3	3.5	4	5	6
8			WAL615766						
10			WAL615767						
12			WAL615768						
15			WAL615769						
16 A			WAL615770						
18			WAL615771						
20			WAL615772						
22			WAL615773						
25			WAL615774						
28			WAL615775						
30			WAL615776						
35			WAL615777			WAL615777			
38			WAL615778			WAL615778			
42			WAL615779			WAL615779			

Model	Art. no.
Removal tool	WAL617090



Model	Art. no.
Clamping jaws	See table



Model	Art. no.
Reshaping adapter without internal support	See table



Model	Art. no.
Reshaping with internal support	See table



Reshaping adapter for WalformPlus-M steel fittings (E235, E355)									
Tube outer diameter (mm)	Wall thickness (mm)								
	1	1.5	2	2.5	3	3.5	4	5	6
8			WAL625706	WAL625707					
10			WAL625708	WAL625709					
12			WAL624536	WAL625710					
15			WAL625711						
16 A			WAL623406						
18			WAL625712						
20			WAL625713						
22			WAL625714						
25			WAL625715						
28			WAL625716						
30			WAL625717						
35			WAL625718						
38			WAL625719						
42			WAL625720						

Reshaping adapter for WalformPlus-M stainless steel fittings (1.4571)									
Tube outer diameter (mm)	Wall thickness (mm)								
	1	1.5	2	2.5	3	3.5	4	5	6
8				WAL625721					
10				WAL624548					
12			WAL623405	WAL625722					
15			WAL625723						
16 A			WAL623406						
18			WAL625724						
20			WAL623407						
22			WAL625725						
25			WAL623408						
28			WAL625726						
30			WAL623409						
35			WAL626536					WAL625727	
38			WAL623411					WAL623429	
42			WAL626533					WAL625720	

- Reshaping without internal support
- Reshaping with internal support

Walform tube fittings

The reliable M-WF385Xplus

Walform machine

- The M-WF385Xplus machine has been designed for the most demanding applications and can be used for tube reshaping with the WalformPlus system (for both steel and stainless steel).



Model	Art. no.
M-WF385Xplus	WAL626385

Key features and benefits:

- For final assembly of Waltech WalformPlus fittings with diameters between 6 and 42 mm
- Fast cycle times ensure efficient and cost-effective production
- Time-saving and easy tool change process
- The compact dimensions and reduced weight simplify transport to the point of use
- The rugged design reduces downtime and ensures a long service life of the machine
- The ability to control the shaping pressure reduces energy consumption and prolongs service life
- More silent operation for reduced noise levels during production
- Color-coded tools help to prevent errors in the reshaping process

M-WF385Xplus technical data:

Weight:	280 kg
Dimensions (W x H x D):	850 x 275 x 990 mm
Standard voltage:	400 V AC*
Frequency:	50 Hz
Circuit protection:	16 A
Power consumption:	2.8 kW

*230 V for part number WAL626353; 440 V and 480 V available on request

Accessories and spare parts:

Model	Art. no.
MW1 assembly trolley (complete)	WAL626257

Assembly trolley for Walform machine with drawer cabinet and removal tool holder

Model	Art. no.
MW1 basic version	WAL626258

Assembly trolley for Walform machine without drawer cabinet or removal tool holder

Model	Art. no.
MW1 removal tool holder	WAL626261

Removal tool holder

Model	Art. no.
MW1 drawer cabinet	WAL626259

Drawer cabinet, can be positioned as required

Model	Art. no.
Foot switch	WAL609949

Foot switch for Walform machine

Model	Art. no.
Adapter 1.5 m 5G2.5 400 V 32 A/11 kW to 16 A	WAL626329

Adapter for 32 A networks



Walform tube fittings

Clamping jaws for WalformPlus and WalformPlus-SR steel fittings (E235 and E355)

Tube outer diameter (mm)	Wall thickness (mm)									
	1	1.5	2	2.5	3	3.5	4	5	6	
6	WAL625294	WAL615765								
8	WAL625295		WAL615766							
10	WAL625296		WAL615767							
12	WAL625297		WAL615768							
15	WAL625298		WAL615769							
16 A		WAL625299		WAL615770				WAL615770		
18		WAL625300		WAL615771						
20					WAL615772* (WAL625814*)					
22		WAL625301		WAL615773						
25					WAL615774* (WAL625816*)					
28					WAL615775					
30			WAL625302		WAL615776				WAL615776* (WAL625489*)	
35			WAL625303		WAL615777				WAL615777	
38						WAL615778			WAL615778* (WAL625818*)	
42			WAL625304					WAL615779		

*Special clamping jaws must be used with tube material E355. See the part number in brackets.

For tube sizes where standard clamping jaws can also be used with tube material E355, please refer to the notes in chapter C.

Reshaping adapter for WalformPlus and WalformPlus-SR steel fittings (E235 and E355)

Tube outer diameter (mm)	Wall thickness (mm)									
	1	1.5	2	2.5	3	3.5	4	5	6	
6	WAL625272	WAL615820								
8	WAL625273	WAL615821	WAL615822	WAL625325						
10	WAL625274	WAL615823	WAL615824	WAL615825	WAL615826					
12	WAL625275	WAL615827	WAL615830	WAL615831	WAL615832					
15	WAL625276	WAL615833	WAL615836	WAL615839						
16 A		WAL625277	WAL615842	WAL615845	WAL615848			WAL615849		
18		WAL625278	WAL615850	WAL615853	WAL615856					
20			WAL615857	WAL615860		WAL615863		WAL615864		
22		WAL625279	WAL615865	WAL615995	WAL615868	WAL615869				
25			WAL615870	WAL615873	WAL615876	WAL615877	WAL615878	WAL615994		
28			WAL615879	WAL615882	WAL615885		WAL615888			
30			WAL625280	WAL615889	WAL615892			WAL615895		WAL615896
35			WAL625281	WAL624009	WAL615897		WAL615900	WAL615901		
38					WAL615902		WAL615905		WAL615906	
42			WAL625282		WAL615908	WAL615911	WAL615914			

- Reshaping without internal support
- Reshaping with internal support
- Reshaping for WalformPlus-SR (for an overview of the available support rings, see chapter D)

Model	Art. no.	Model	Art. no.	Model	Art. no.	Model	Art. no.
Removal tool	WAL617090	Clamping jaws	See table	Reshaping with internal support	See table	Reshaping adapter without internal support	See table



Cutting-ring assembly using the MHH-R manual pre-assembly device

MHH-R

Manual pre-assembly device

Model	Art. no.
MHH-R	WAL624423



MHH-R technical data:	
Weight:	29 kg
Dimensions (W x H x D):	400 x 170 x 500 mm

Key features and benefits:

- A user-friendly and cost-effective alternative to the M-R7 machine
- The device offers a high degree of flexibility and requires no electricity
- It is easy to transport and especially suitable for use on construction sites
- Suitable for all Waltech cutting-ring systems, thanks to the easy tool change function

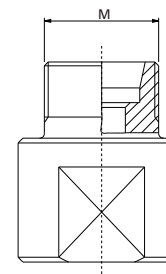
Cutting-ring assembly using the manual pre-assembly adapter

S-VK ... / P-VK ...

- Manual pre-assembly adapter for Walpro / Walpro-X

W-VK ...

- Manual pre-assembly adapter for Walring



K

PRE-ASS. AD. P- ...

Pre-assembly adapter for Walpro / Walpro-X



PRE-ASS. AD. W- ...

Pre-assembly adapter for Walring



BACKING PLATE ...

Backing plate for Walpro / Walpro-X / Walring



Series	Tube outer diameter	Walpro pre-assembly adapter		Walring pre-assembly adapter		Backing plate		
		Model	Art. no.	Model	Art. no.	Model	Art. no.	
L	6	PRE-ASSEMBLY ADAPTER P-6 L BRN	WAL028382	PRE-ASS. AD. W-6 L-GE BRN	WAL624550	BACKING PLATE 6 L/S	WAL608363	
	8	PRE-ASS. AD. P-8 L BRN	WAL028383	PRE-ASS. AD. W-8 L-GE BRN	WAL624551	BACKING PLATE 8 L/S	WAL608364	
	10	PRE-ASS. AD. P-10 L BRN	WAL028384	PRE-ASS. AD. W-10 L-GE BRN	WAL624552	BACKING PLATE 10 L/S	WAL608365	
	12	PRE-ASS. AD. P-12 L BRN	WAL028385	PRE-ASS. AD. W-12 L-GE BRN	WAL624553	BACKING PLATE 12 L/S	WAL608366	
	15	PRE-ASS. AD. P-15 L BRN	WAL028386	PRE-ASS. AD. W-15 L-GE BRN	WAL624554	BACKING PLATE 15 L	WAL608367	
	18	PRE-ASS. AD. P-18 L BRN	WAL028387	PRE-ASS. AD. W-18 L-GE BRN	WAL624555	BACKING PLATE 18 L	WAL608368	
	22	PRE-ASS. AD. P-22 L BRN	WAL028388	PRE-ASS. AD. W-22 L-GE BRN	WAL624556	BACKING PLATE 22 L	WAL608369	
	28	PRE-ASS. AD. P-28 L BRN	WAL028389	PRE-ASS. AD. W-28 L-GE BRN	WAL624557	BACKING PLATE 28 L	WAL608370	
	35	PRE-ASS. AD. P-35 L BRN	WAL028390	PRE-ASS. AD. W-35 L-GE BRN	WAL624558	BACKING PLATE 35 L	WAL608371	
	42	PRE-ASS. AD. P-42 L BRN	WAL028391	PRE-ASS. AD. W-42 L-GE BRN	WAL624559	BACKING PLATE 42 L	WAL608372	
	S	6	PRE-ASS. AD. P-6 S BRN	WAL028392	PRE-ASS. AD. W-6 S-GE BRN	WAL624560	BACKING PLATE 6 L/S	WAL608363
		8	PRE-ASS. AD. P-8 S BRN	WAL028393	PRE-ASS. AD. W-8 S-GE BRN	WAL624561	BACKING PLATE 8 L/S	WAL608364
		10	PRE-ASS. AD. P-10 S BRN	WAL028394	PRE-ASS. AD. W-10 S-GE BRN	WAL624562	BACKING PLATE 10 L/S	WAL608365
		12	PRE-ASS. AD. P-12 S BRN	WAL028395	PRE-ASS. AD. W-12 S-GE BRN	WAL624563	BACKING PLATE 12 L/S	WAL608366
14		PRE-ASS. AD. P-14 S BRN	WAL028396			BACKING PLATE 14 S	WAL608373	
16		PRE-ASS. AD. P-16 S BRN	WAL028397	PRE-ASS. AD. W-16 S-GE BRN	WAL624564	BACKING PLATE 16 S	WAL608374	
20		PRE-ASS. AD. P-20 S BRN	WAL028398	PRE-ASS. AD. W-20 S-GE BRN	WAL624565	BACKING PLATE 20 S	WAL608375	
25		PRE-ASS. AD. P-25 S BRN	WAL028399	PRE-ASS. AD. W-25 S-GE BRN	WAL624566	BACKING PLATE 25 S	WAL608376	
30		PRE-ASS. AD. P-30 S BRN	WAL028400	PRE-ASS. AD. W-30 S-GE BRN	WAL624567	BACKING PLATE 30 S	WAL608377	
38		PRE-ASS. AD. P-38 S BRN	WAL028401	PRE-ASS. AD. W-38 S-GE BRN	WAL624568	BACKING PLATE 38 S	WAL608378	

The pre-assembly tools listed above can also be used with the MEG-R6 assembly machine (predecessor model of the M-R7).
Tools for controlled final assembly using the MEG-R6 machine can be found at the end of this chapter.

K

Series	Tube outer diameter	M	kg/100 pc.	Walpro Manual pre-assembly adapter		Walring Manual pre-assembly adapter		
				Model	Art. no.	Model	Art. no.	
LL	4	M 8 x 1	2.7	S-VK 4 LL	WAL029250			
	6	M 10 x 1	2.8	S-VK 6 LL	WAL029252			
	8	M 12 x 1	3.9	S-VK 8 LL	WAL029253			
	6	M 12 x 1.5	4.4	P-VK 6 L	WAL029254	W-VK 6 L	WAL624967	
L	8	M 14 x 1.5	6.4	P-VK 8 L	WAL029255	W-VK 8 L	WAL624969	
	10	M 16 x 1.5	6.6	P-VK 10 L	WAL029256	W-VK 10 L	WAL624971	
	12	M 18 x 1.5	8.1	P-VK 12 L	WAL029257	W-VK 12 L	WAL624973	
	15	M 22 x 1.5	18.0	P-VK 15 L	WAL029258	W-VK 15 L	WAL624974	
	18	M 26 x 1.5	21.0	P-VK 18 L	WAL029259	W-VK 18 L	WAL624976	
	22	M 30 x 2	30.0	P-VK 22 L	WAL029260	W-VK 22 L	WAL624978	
	28	M 36 x 2	44.3	P-VK 28 L	WAL029261	W-VK 28 L	WAL624980	
	35	M 45 x 2	63.5	P-VK 35 L	WAL029262	W-VK 35 L	WAL624982	
	42	M 52 x 2	91.5	P-VK 42 L	WAL029263	W-VK 42 L	WAL624984	
	S	6	M 14 x 1.5	6.5	P-VK 6 S	WAL029264	W-VK 6 S	WAL624966
		8	M 16 x 1.5	6.7	P-VK 8 S	WAL029265	W-VK 8 S	WAL624968
		10	M 18 x 1.5	8.2	P-VK 10 S	WAL029266	W-VK 10 S	WAL624970
		12	M 20 x 1.5	18.0	P-VK 12 S	WAL029267	W-VK 12 S	WAL624972
		14	M 22 x 1.5	18.2	P-VK 14 S	WAL029268		
16		M 24 x 1.5	18.7	P-VK 16 S	WAL029269	W-VK 16 S	WAL624975	
20		M 30 x 2	29.0	P-VK 20 S	WAL029270	W-VK 20 S	WAL624977	
25		M 36 x 2	43.0	P-VK 25 S	WAL029271	W-VK 25 S	WAL624979	
30		M 42 x 2	62.3	P-VK 30 S	WAL029272	W-VK 30 S	WAL624981	
38		M 52 x 2	94.0	P-VK 38 S	WAL029273	W-VK 38 S	WAL624983	

Cutting-ring assembly using the M-R7 assembly machine

The innovative M-R7 cutting-ring final assembly machine

The new M-R7 machine is designed for the controlled final assembly of our Walpro and Walring systems.

It offers optimized performance and a number of other benefits, including a short tightening rotation and a reduction in the amount of force required during final assembly.



Model	Art. no.
M-R7	WAL627627



K

Key features and benefits:

- Suitable for processing 180° bent tubes with an outer diameter of R = 1.5 (previously an outer diameter of R = 6.4 x)
- For final assembly of Waltech Walpro and Walring fittings with diameters between 6 and 42 mm
- The production process is efficient and cost-effective
- The process starts automatically when the tube makes contact with the tool
- The machine can process tightly bent and short straight tubes
- Modern RFID technology is used for tool recognition and adjustment of the machining values
- Automatic pressure point detection and rotation control ensure robust, leakage-free and safe tube fittings
- Optimized error detection thanks to preprogrammed tolerance values based on statistical process control
- The assembly parameters can be exported to external devices via a USB port for integration into quality control systems
- Day counter with reset function and series counter
- Intuitive and user-friendly touch panel (7")
- Existing Waltech tools can be retrofitted with RFID technology
- Compact and lightweight tabletop device

M-R7 technical data:

- Weight: 105 kg
- Dimensions (W x H x D): 770 x 225 x 650 mm
- Standard voltage: 400 V AC
- 3-phase
- Frequency: 50 Hz
- Circuit protection: 16 A
- Plug: CEE 16
- Power consumption: 1.8 kW

Model	Art. no.
Adapter 1.5 m 5G2.5 400 V 32 A/11 kW to 16 A	WAL626329
Adapter for 32 A networks	



- Plastic housing
- Input: 1.5 m H07RN-F 5G2.5 with CEE plug (400 V/32 A/5-pole)
- Output: 1 x CEE socket (400 V/16 A/5-pole) with hinged cover
- Circuit protection: 1 circuit breaker, C 16 A, 3-pole, resettable, 400 V/32 A max. 11 kW

Cutting-ring assembly using the M-R7 assembly machine

GE adapter ...

Adapters for controlled final assembly of Walpro / Walpro-X fittings



WR adapter ...

Studs for controlled final assembly of Walring fittings



BACKING PLATE M-R7 ...

Backing plate for Walpro / Walpro-X / Walring



K

Series	Tube outer diameter	Walpro GE adapter		Walring W-R adapter		Backing plate for M-R7		
		Model	Art. no.	Model	Art. no.	Model	Art. no.	
L	6	GE adapter 6L M-R7	WAL627874	W-R adapter 6L M-R7	WAL627800	Backing plate 6L/5 M-R7 KPL	WAL627894	
	8	GE adapter 8L M-R7	WAL627875	W-R adapter 8L M-R7	WAL627801	Backing plate 8L/5 M-R7 KPL	WAL627895	
	10	GE adapter 10L M-R7	WAL627876	W-R adapter 10L M-R7	WAL627802	Backing plate 10L/5 M-R7 KPL	WAL627896	
	12	GE adapter 12L M-R7	WAL627877	W-R adapter 12L M-R7	WAL627803	Backing plate 12L/5 M-R7 KPL	WAL627897	
	15	GE adapter 15L M-R7	WAL627878	W-R adapter 15L M-R7	WAL627804	Backing plate 15L M-R7 KPL	WAL627899	
	18	GE adapter 18L M-R7	WAL627879	W-R adapter 18L M-R7	WAL627805	Backing plate 18L M-R7 KPL	WAL627901	
	22	GE adapter 22L M-R7	WAL627880	W-R adapter 22L M-R7	WAL627806	Backing plate 22L M-R7 KPL	WAL627903	
	28	GE adapter 28L M-R7	WAL627881	W-R adapter 28L M-R7	WAL627807	Backing plate 28L M-R7 KPL	WAL627905	
	35	GE adapter 35L M-R7	WAL627882	W-R adapter 35L M-R7	WAL627808	Backing plate 35L M-R7 KPL	WAL627907	
	42	GE adapter 42L M-R7	WAL627883	W-R adapter 42L M-R7	WAL627809	Backing plate 42L M-R7 KPL	WAL627909	
	S	6	GE adapter 6S M-R7	WAL627884	W-R adapter 6S M-R7	WAL627810	Backing plate 6L/5 M-R7 KPL	WAL627894
		8	GE adapter 8S M-R7	WAL627885	W-R adapter 8S M-R7	WAL627811	Backing plate 8L/5 M-R7 KPL	WAL627895
10		GE adapter 10S M-R7	WAL627886	W-R adapter 10S M-R7	WAL627812	Backing plate 10L/5 M-R7 KPL	WAL627896	
12		GE adapter 12S M-R7	WAL627887	W-R adapter 12S M-R7	WAL627813	Backing plate 12L/5 M-R7 KPL	WAL627897	
14		GE adapter 14S M-R7	WAL627888	-	-	Backing plate 14S M-R7 KPL	WAL627898	
16		GE adapter 16S M-R7	WAL627889	W-R adapter 16S M-R7	WAL627814	Backing plate 16S M-R7 KPL	WAL627900	
20		GE adapter 20S M-R7	WAL627890	W-R adapter 20S M-R7	WAL627815	Backing plate 20S M-R7 KPL	WAL627902	
25		GE adapter 25S M-R7	WAL627891	W-R adapter 25S M-R7	WAL627816	Backing plate 25S M-R7 KPL	WAL627904	
30		GE adapter 30S M-R7	WAL627892	W-R adapter 30S M-R7	WAL627817	Backing plate 30S M-R7 KPL	WAL627906	
38		GE adapter 38S M-R7	WAL627893	W-R adapter 38S M-R7	WAL627818	Backing plate 38S M-R7 KPL	WAL627908	

Special machine assembly

Fast and reliable assembly is crucial for tube-fitting systems. Yet the results may vary due to human error during the assembly process.

To ensure superior performance, the best solution is to automate the cutting-ring assembly and tube reshaping process. For this reason, we have developed tailor-made assembly machines to optimize the assembly of Waltech systems, based on our many years of experience in the field and our holistic approach to in-house value creation, from design to production.

In-house machine design and production

Based on decades of experience, we develop and produce our assembly machines at our factory in Lohmar, Germany. Our specialized machine design and production department monitors this process throughout - from the design and prototyping phase all the way to testing and optimization.

Over the years, we have incorporated extensive customer feedback into our design process, from large OEM customers that require maximum reliability and low cycle times, to small distributors looking for a high degree of flexibility and a wide range of options.

Today, we manufacture up to 80 machines each year and offer many options for the servicing and maintenance of older machines. We pride ourselves on manufacturing all our tools in-house, which guarantees stable machine performance and a long service life. In addition, we also offer a large number of machines for rent, to support customer projects and to provide replacements in the event of maintenance.

K



Machines

M-WF385Xplus



Tools

Clamping jaws for WalformPlus



Reshaping adapter with internal support



M-R7



Backing plate



Complete GE adapter



K

M-WF385X/BO



Clamping jaws for flared tube fittings

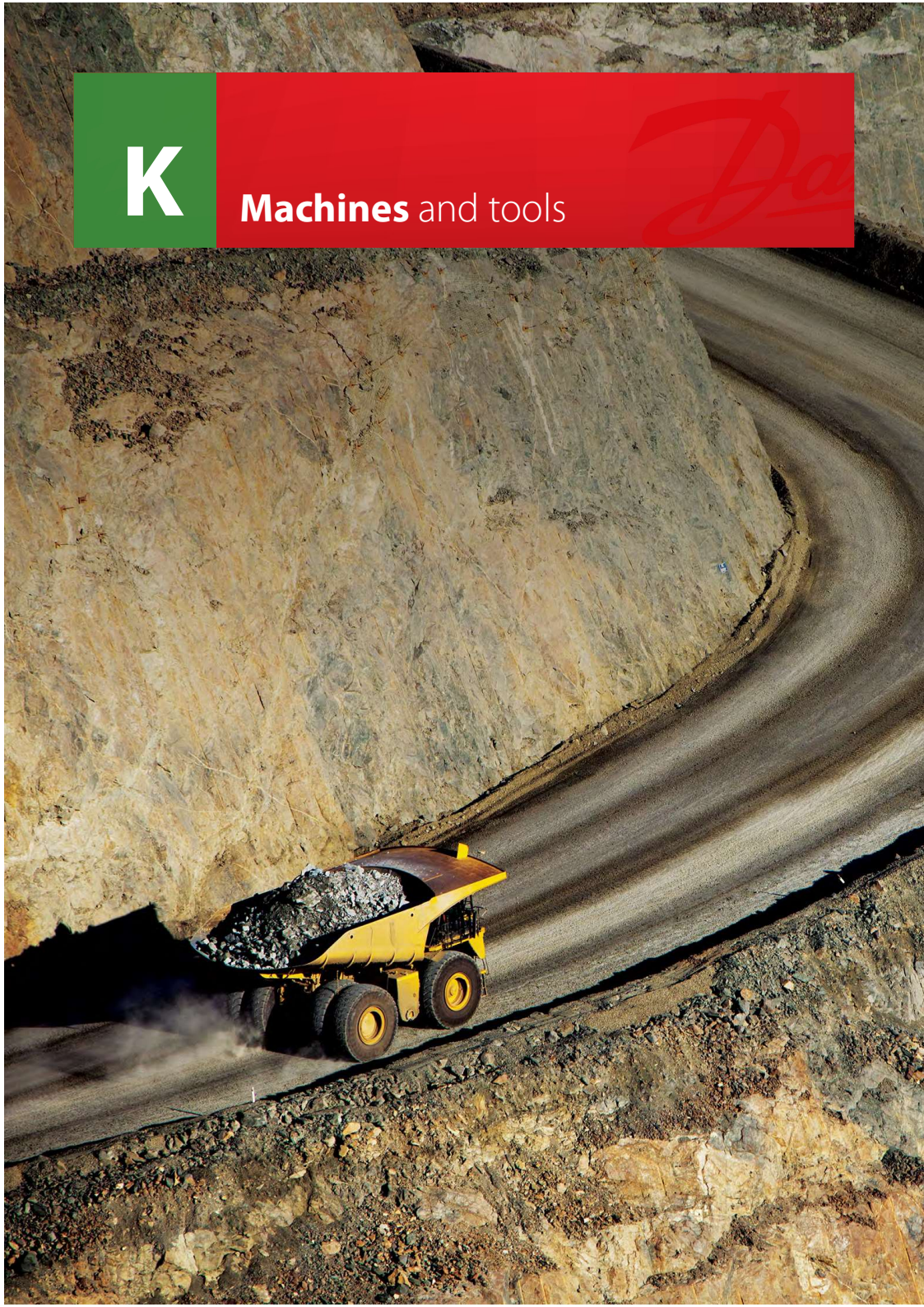


Flare fitting and mandrel with mechanically resistant coating



K

Machines and tools



Machines and tools - overview 3

Cutting-ring assembly using the M-R7 assembly machine 5

Cutting-ring assembly using the MHH-R manual pre-assembly device 7

Cutting-ring assembly using the manual pre-assembly adapter 8

M-WF385X*plus* WalformPlus machine 9

WalformPlus tools for steel 10

WalformPlus tools for stainless steel (1.4571) 11

WalformPlus-M tools for steel and stainless steel (1.4571) 12

M-WF385X/BO WalformPlus / flaring machine 13

MHH-BO manual flaring device 15

Tube bending tools 16

Replacement tools for machine type MEG-R 17

Replacement tools for MEG-BO2 18

Waltech sample case 19